

# SOUTHERN CALIFORNIA WATER DIALOGUE



A REGIONAL WATER AGENCY  
SINCE 1954

Heather Dyer, MS, MBA  
CEO/ General Manager  
March 27, 2024



# Who is San Bernardino Valley?

- Water wholesaler and State Water Contractor
- Formed in 1954 with a 5-Member elected Board
- Provide supplemental water and groundwater management
- 325 square mile service area, 700,000 people, 15 retail agencies



# OUR *Mission* IS TO...

Work **collaboratively** to provide a **reliable** and **sustainable** water supply to support the changing needs of our region's **people** and **environment**.





# Perspective.

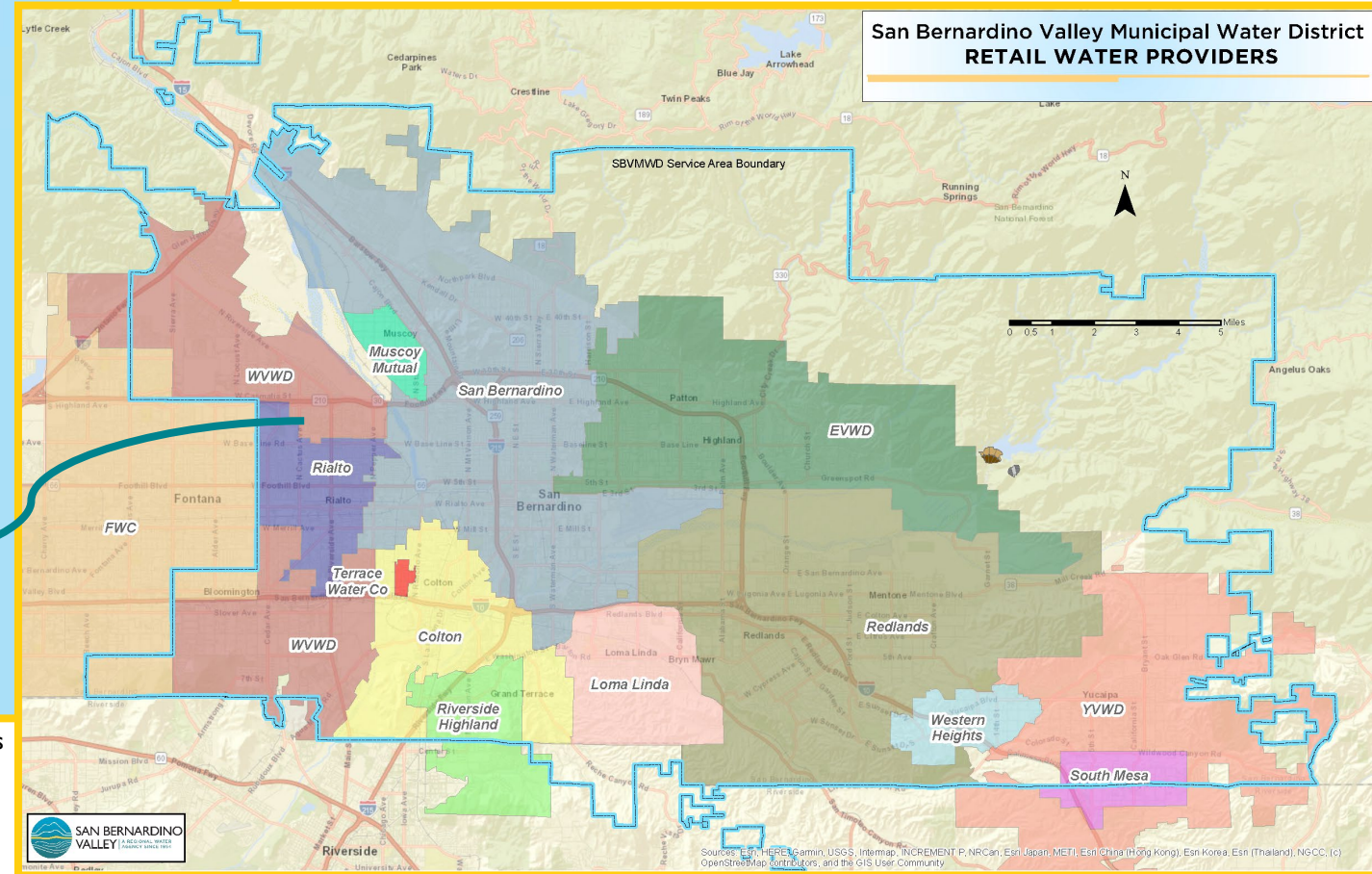
## State Water Project

- River/Natural Conveyance
- Canal/Pipeline
- Reservoir
- Pump Station
- Hydroelectric Station
- Sierra Nevada Mountains



Image Courtesy of the State Water Contractors

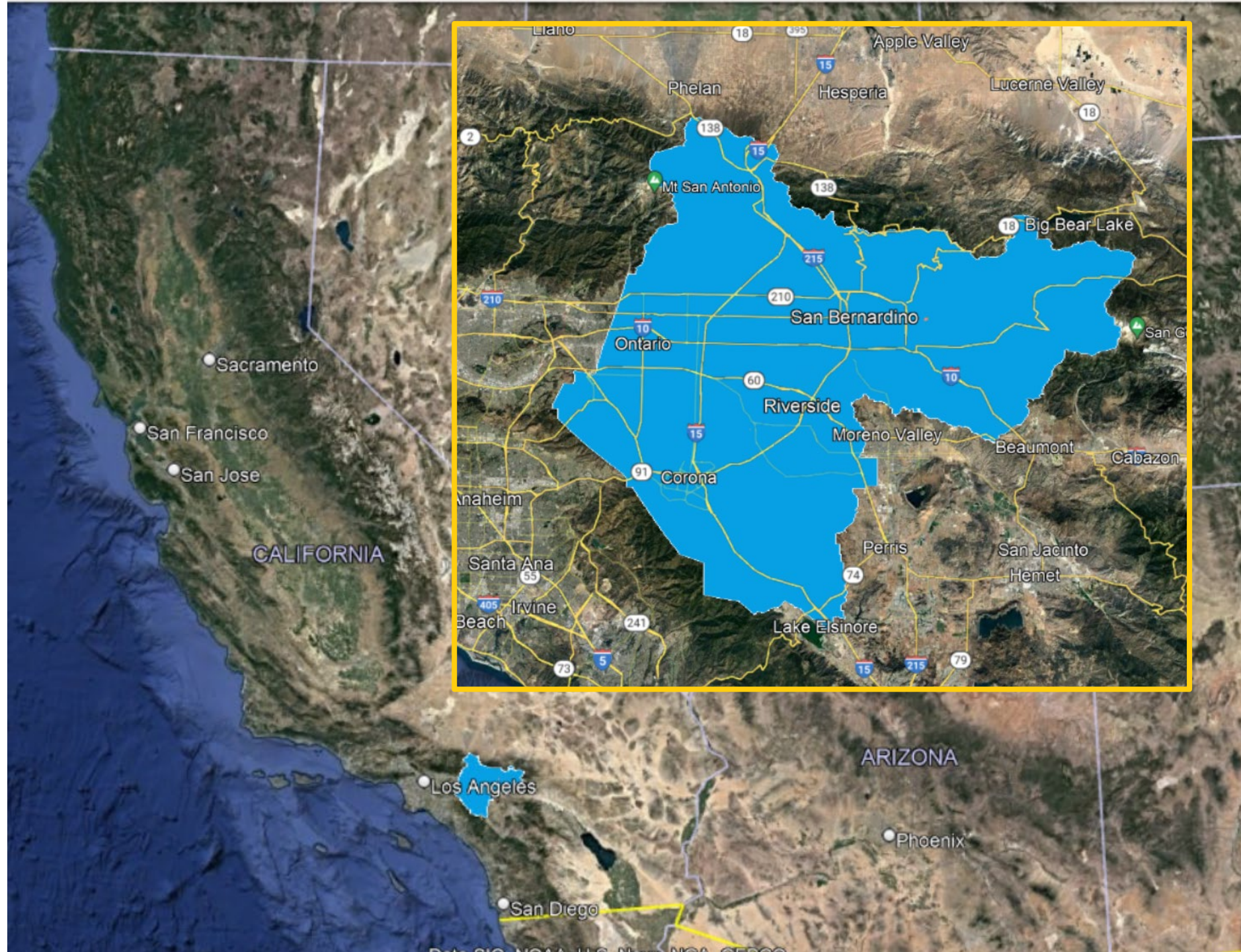
## San Bernardino Valley Municipal Water District RETAIL WATER PROVIDERS





# Santa Ana River Watershed

# Largest coastal stream system in Southern California







# Be Ready to Pivot

- Plan today for future unknowns
- Maximize value of wet years
- Storage is our savings account
- Water Use Efficiency stretches the savings
- Adaptive tools for changed climate

# Ensure a reliable water supply to the region we serve, forever.

FORESIGHT

Vision

## RESILIENCE

Strategy

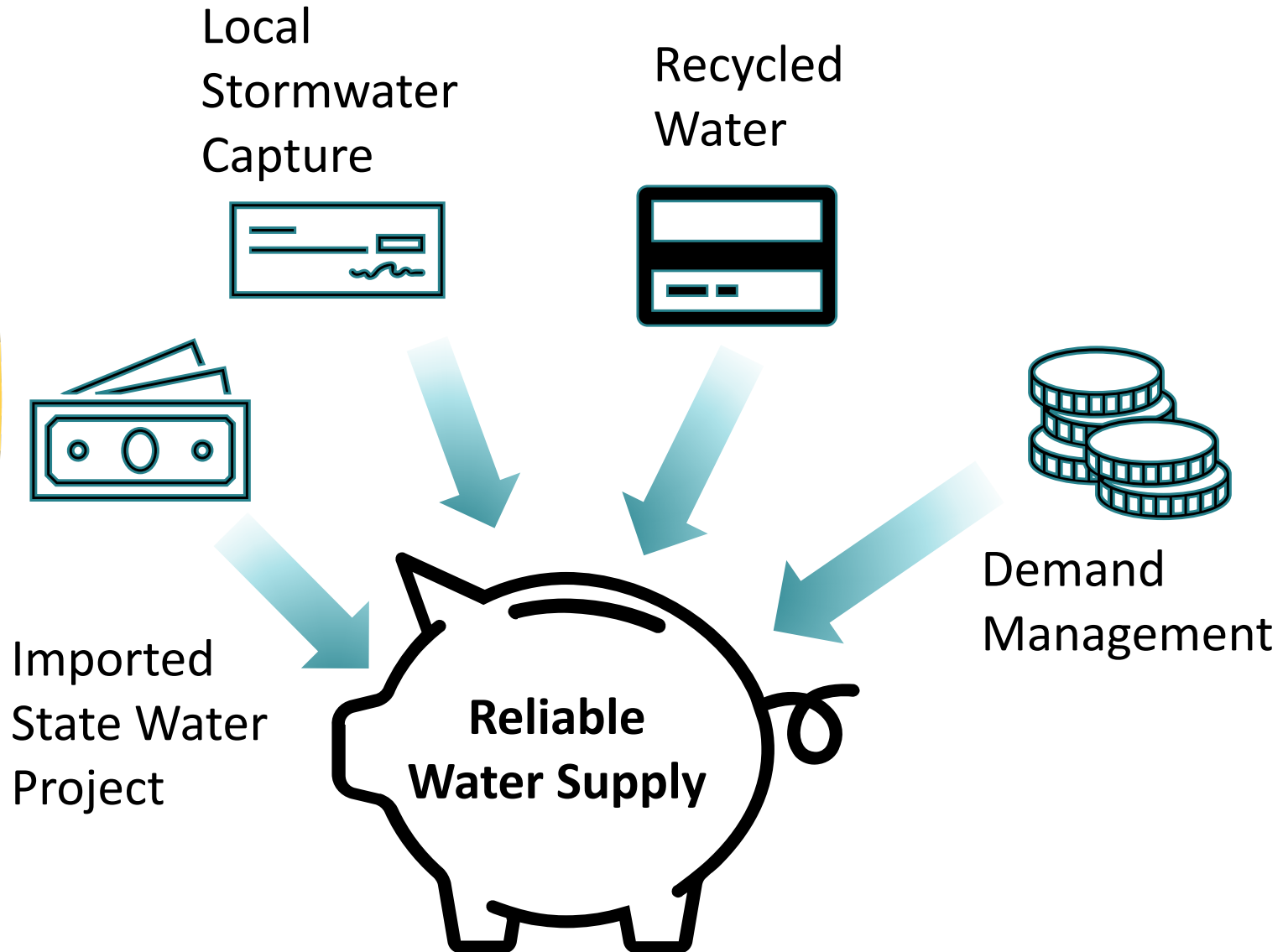
STEWARDSHIP







# Diversity = Resilience







A REGIONAL WATER AGENCY  
SINCE 1954



# Imported Water- State Water Project

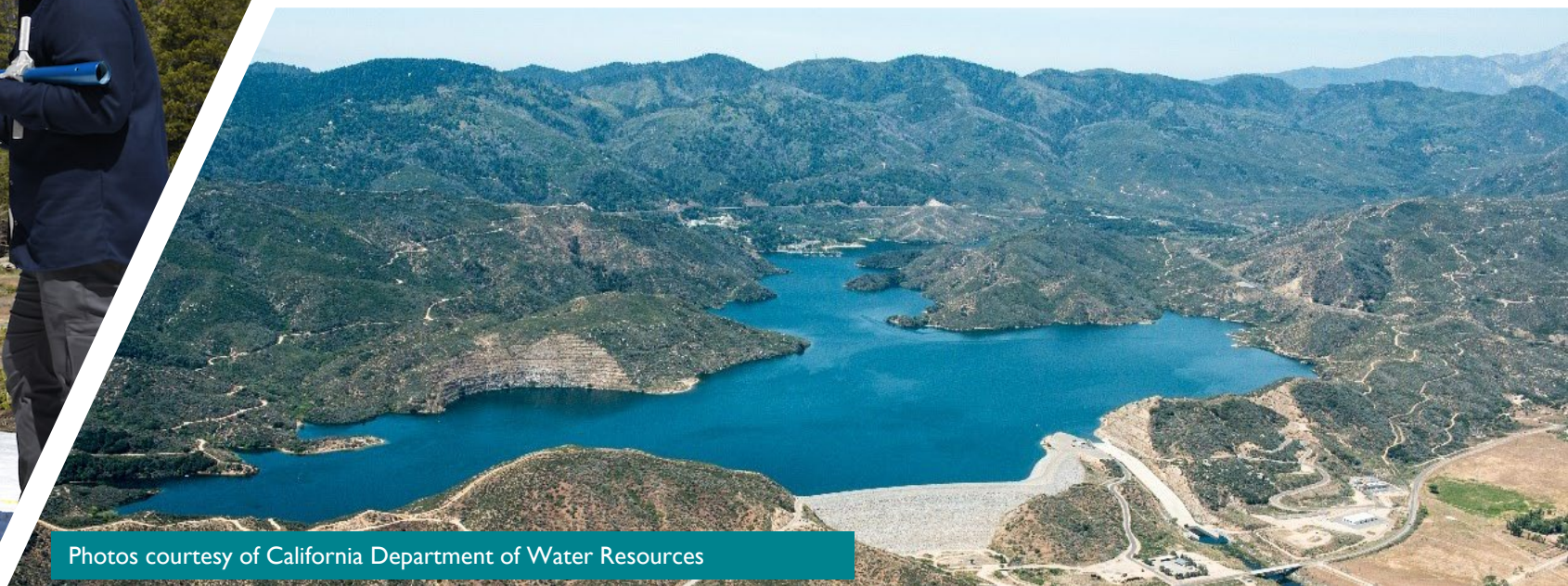




March 2024



April 2022



Photos courtesy of California Department of Water Resources



# On the Horizon: Sites Reservoir

- Capture winter runoff from uncontrolled streams below the existing reservoirs in the Sacramento Valley
- Will increase the resiliency of water supplies because it will not rely on spring snowmelt for filling
  - Will capture storm-related runoff and storm-related flood water





# Building Local Projects

The bottom half of the slide features several horizontal, wavy lines in a lighter shade of blue, creating a sense of movement or waves against the darker blue background.



# Regional Recycled Water: Weaver Basins

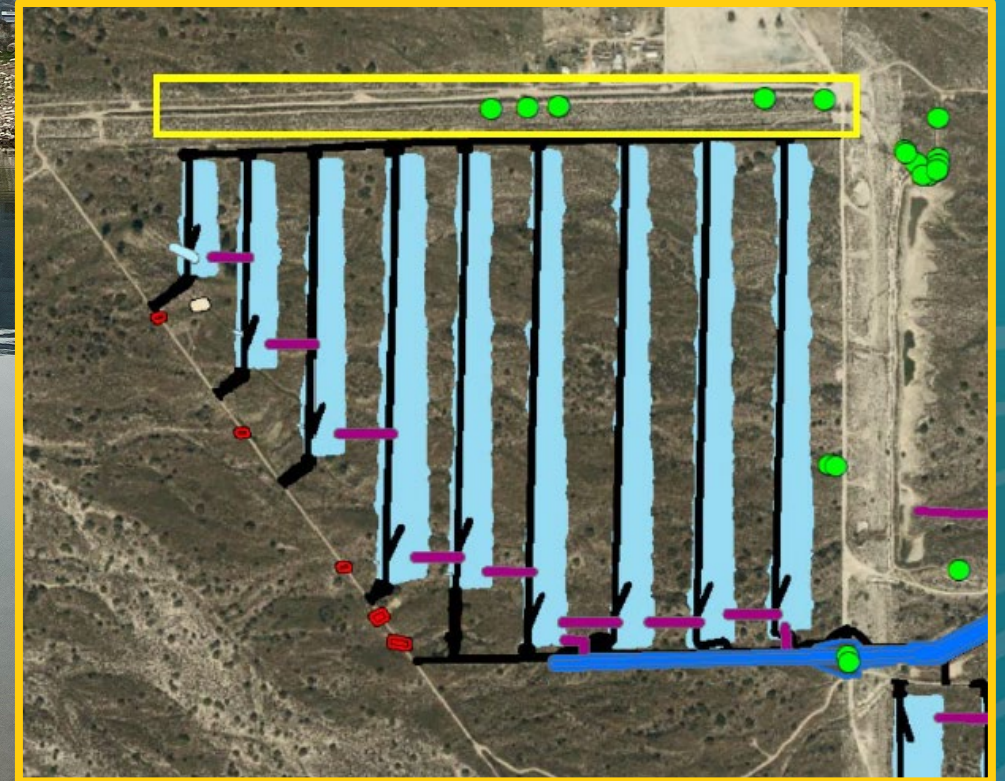




# Stormwater Capture: Enhanced Recharge Project – IB



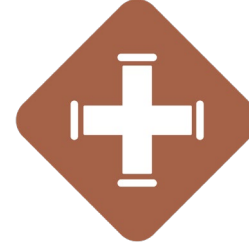
A REGIONAL WATER AGENCY  
SINCE 1954





# Watershed Connect:

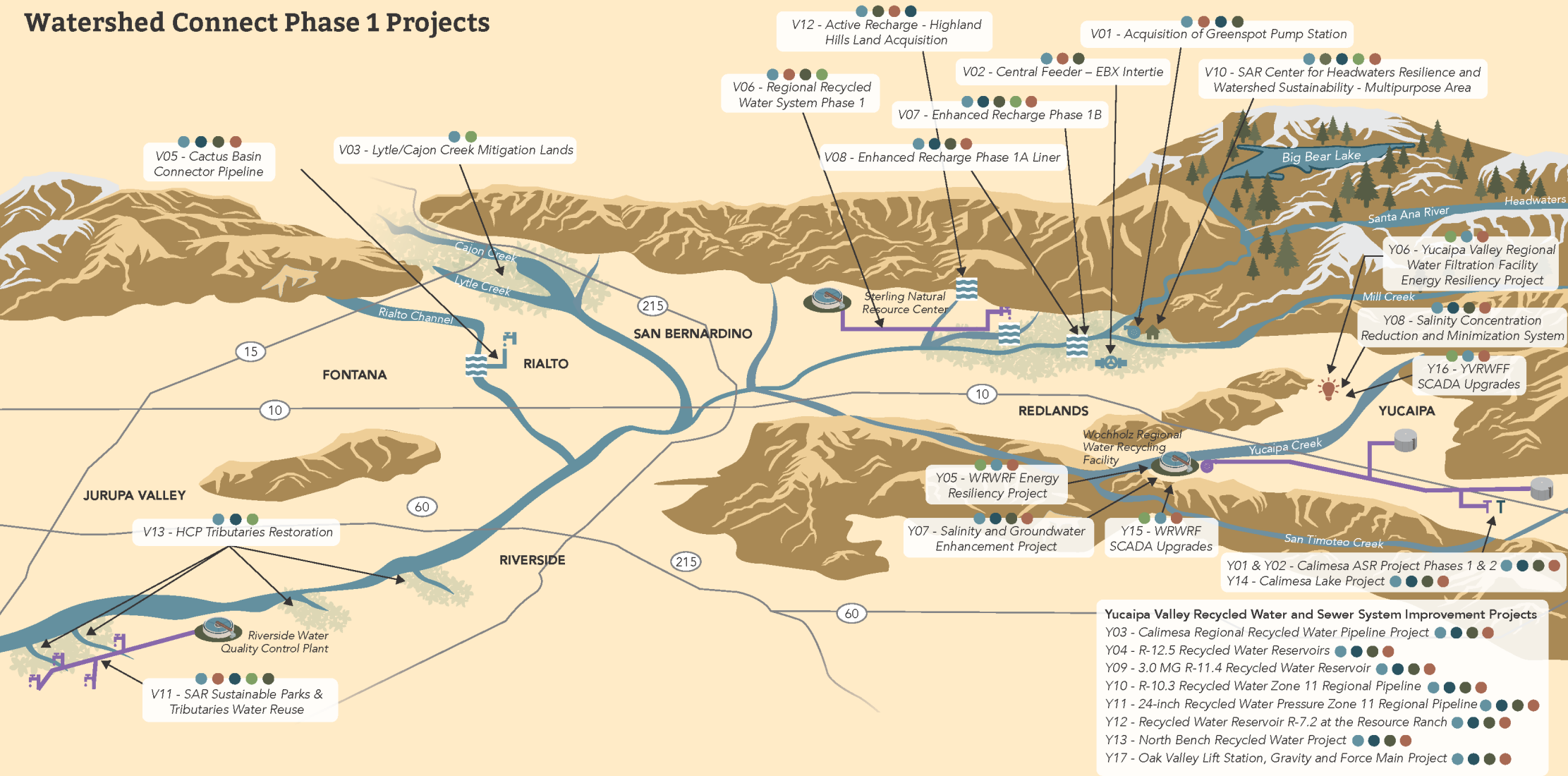
*Achieving resilience through integrated infrastructure*



- Interconnected and integrated funding opportunity
- A long-term funding tool for water infrastructure
  - ~\$600M worth of water infrastructure over decades
- Maximize value, offer synergistic benefits
- Low-cost financing for water supply and energy projects



Watershed Connect Phase 1 Projects



LEGEND

- |                             |                             |                             |                               |
|-----------------------------|-----------------------------|-----------------------------|-------------------------------|
| Wastewater Treatment Plant  | Natural Waterway or Channel | Groundwater Recharge Basin  | Habitat Restoration Area      |
| Recycled Water Turnout      | Recycled Water Pipeline     | Recycled Water Pump Station | Recycled Water Reservoir      |
| State Water Project Turnout | Raw Water Pipeline          | Raw Water Pump Station      | Injection and Extraction Well |

PROGRAM BENEFITS

- |  |                             |                    |
|--|-----------------------------|--------------------|
| Resilience in the Face of Climate Change | Infrastructure Enhancements | Drought Resiliency |
| Improved Water Quality                   | Ecological Health           |                    |





A REGIONAL WATER AGENCY  
SINCE 1954